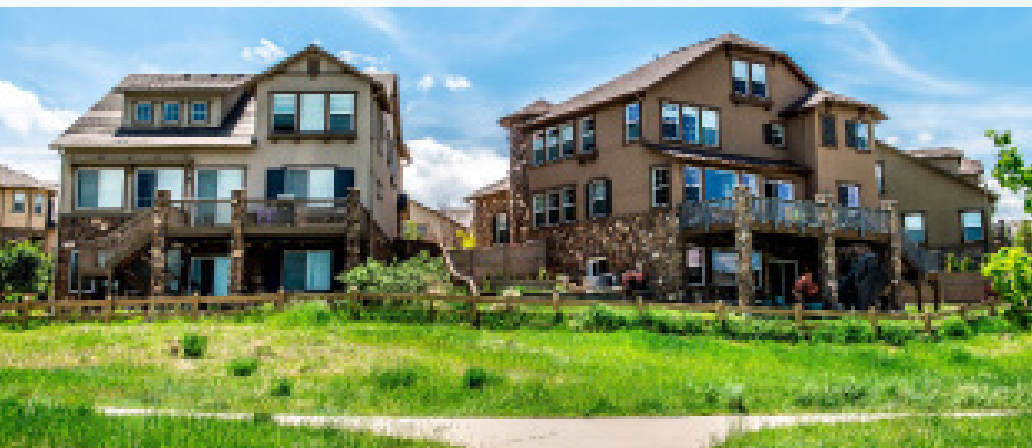


HIGHLANDS RANCH

RE/MAX
of cherry creek
because experience matters®



LOCATION:

As a suburb of Denver, Highlands Ranch is part of both the greater Denver metropolitan area and the Front Range Urban Corridor. It borders several other Denver suburbs including Littleton and Centennial to the north and Acres Green and Lone Tree to the east. In addition, Highlands Ranch borders Chatfield State Park to the west.

ABOUT:

Highlands Ranch has been named by Business magazine as "one of the best places in Colorado to raise your kids." Indeed, it would be hard to find a more family friendly area than this thoughtfully developed, expansive neighborhood just 12 miles south of Denver in Douglas County. Built on 22,000 acres and featuring everything from affordable single-family homes to multi-million dollar mansions, Highlands Ranch is a mecca for those who enjoy an active lifestyle. It boasts 19 parks, 70 miles of running and hiking trails, more than 2,000 acres of open spaces, two public skate parks and 4 rec centers. Its acclaimed public schools have twice earned accreditation with distinction from the Colorado Department of Education. Plentiful family restaurants, Park Meadow shopping center and other retail establishments are just a quick drive away, and workers are within easy commuting distance of downtown Denver and the Denver Tech Center. Those who enjoy outdoor activity, the quieter lifestyle of the suburbs, and a safe environment in which to raise a family will find Ranch living irresistible.

SCHOOLS:

Enter a property address at maps.dpsk12.org to find out which schools are nearby.

DEMOGRAPHICS:

Data from denvermetrodata.org.

TOTAL POPULATION:

108,238

AVG. HOUSEHOLD INCOME:

\$138,840.62

POPULATION AGE:

Under 5:	7.07%	35 - 44:	17.59%
5 - 17:	24.35%	45 - 54:	16.86%
18 - 24:	5.66%	55 - 64:	10.90%
25 - 34:	9.11%	Over 65:	8.46%

2017 MARKET STATISTICS:

OF
HOMES
SOLD : **957**

AVG.
LIST
PRICE : **\$508,366**

AVG.
SALE
PRICE : **\$496,052**

AVG. # OF
DAYS ON
MARKET : **23**